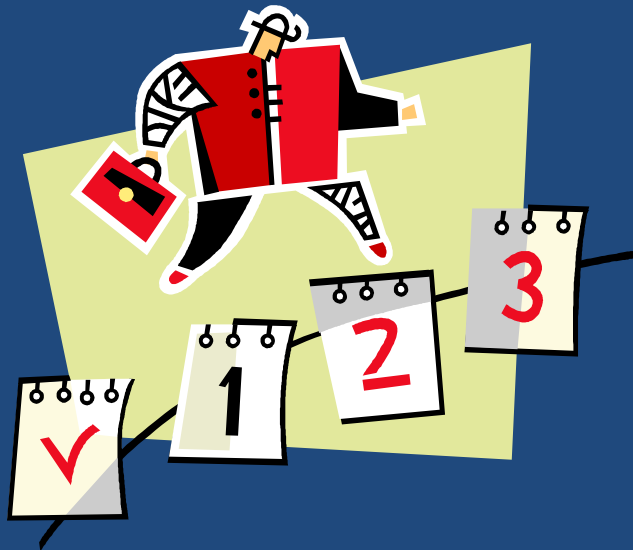


10th Grade Core Curriculum Lesson Bridge Law

2020-2021



Melody McAllister
Dawn Neely
Robin Rohrbach
Kristi Turner
Haley Welch
School
Counselors

WHO'S YOUR SCHOOL COUNSELOR?



Ms. Neely
A – D

Dawn.Neely@cobbk12.org



Mrs. Rohrbach
E – K

Robin.Rohrbach@cobbk12.org



Mrs. Turner
L – Ri

Kristi.Turner@cobbk12.org



Mrs. Welch
L – Ri

Haley.Welch@cobbk12.org



Mrs. McAllister
Ro – Z

Melody.McAllister@cobbk12.org



Mrs. Rich
Counseling Clerk

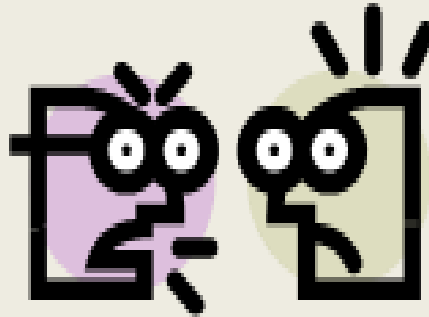
Allyson.Rich@cobbk12.org

REASONS YOU MIGHT SEE YOUR COUNSELOR

ACADEMIC



SOCIAL/EMOTIONAL



CAREER

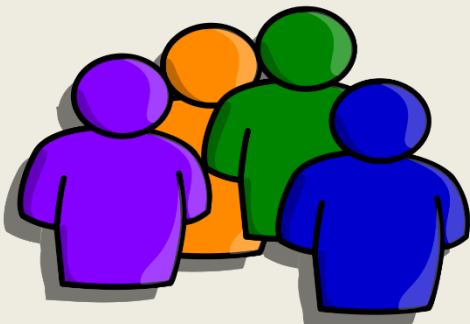


HOW CAN YOU TALK TO YOUR SCHOOL COUNSELOR?

While virtual: Make an appointment by emailing your counselor



[This Photo](#) by Unknown Author is licensed under [CC BY-ND](#)



When in person: More information coming soon!

CONFIDENTIALITY/SAFETY

Confidentiality

Typically, what is said with your counselor will stay with your counselor.

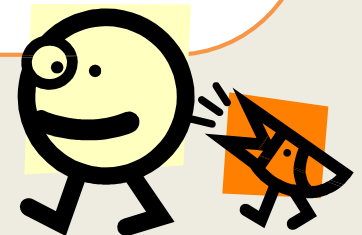
Some **exceptions** include:

- ✓ imminent **danger** to self or others suspicion of
- ✓ **abuse** or neglect of children or the elderly

Crisis/Safety

If you are worried about a friend/peer, notify a counselor immediately.
(ex. suicide, alcohol, drugs, abuse, etc.)

If you see/hear something suspicious, report it to an adult.



Essential Question

How do I plan
for my
future?



LET'S TALK ABOUT...

Graduation requirements – where do you stand?

Reading your transcript

Knowing your HOPE status

Dual Enrollment

Naviance

How do my interests relate to careers?

- Naviance's *Career Interest Profiler*

GRADUATION REQUIREMENTS

Are you on track to graduate?

Promotion Requirements

GRADUATION REQUIREMENTS

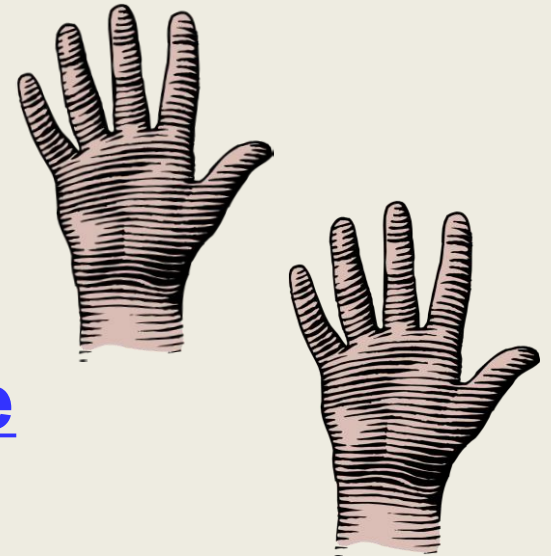
Subject Area	# of Credits Needed
English	4
Math	4
Science	4
Social Studies	3
Health/Personal Fitness	1 (0.5 Health/0.5 BPE)
Career Tech and/or Fine Arts and/or World Language (WL)* (any combination will do)	3 *2 credits of the <u>same</u> WL are required for college entrance
Electives	4
Total	23

Do You Want To Be A Junior?

You can earn up to 8 credits per year, but you need specific credits to promote.

Must earn a total of 10 total credits to promote to 11th:

- Must pass 2 Required English
- Must pass 2 Required Math
- Must pass 2 Required Science
- Must pass 4 more classes



TRANSCRIPTS CCSD & HOPE

- TYPES OF
TRANSCRIPTS

- GPA's

- HOPE INFO

Types of Transcripts

You have 2 types of transcripts:

**Cobb County
&
HOPE**

There are some differences between these 2 documents.

WHAT'S ON YOUR COBB COUNTY TRANSCRIPT?

PERSONAL INFORMATION

CUMULATIVE GPA

weighted & unweighted

CREDITS EARNED & ATTEMPTED

ATTENDANCE INFORMATION

EOC SCORES

TRANSCRIPT CHECK USING YOUR COBB COUNTY TRANSCRIPT

Circle	Circle your Social Security Number (if you have a 999# listed and know that you have a social security number, speak to your counselor ASAP.)
Circle	Circle your GPAs (there are 2) <ul style="list-style-type: none">• Weighted: includes quality points from honors (+0.5) and/or AP (+1)• Unweighted: does not include extra quality points
Draw	Draw a square around Number of Credits Earned
Verify	Verify all credits earned are listed (including middle school)
Underline	Underline EOC scores (if applicable)
Star	Star Attendance Information

COBB COUNTY TRANSCRIPT

Cumulative Grade Point Average=

The average of ALL grades earned in high school.

Includes Electives (PE, CTAE, Fine Arts, etc.)

Includes ALL grades (**PASSED** OR **FAILED**)

Letter Grade	On-Level	Honors= 0.5 Extra Quality Points	AP= 1.0 Extra Quality Points
A	4.0	4.5	5.0
B	3.0	3.5	4.0
C	2.0	2.5	3.0
D	1.0	1.5	2.0
F	0.0	0.0	0.0

LET'S TALK ABOUT HOPE!

What are the
different types
of HOPE?

How is my
HOPE GPA
calculated?

What is HOPE
Rigor?

ZELL MILLER AND HOPE SCHOLARSHIP

Zell Miller Scholarship

- Requires 3.7 core high school (HOPE) GPA as calculated by GSFC
- Requires 1200 SAT Math and Reading or 26 ACT composite
- Must earn a minimum of 4 credits from the academic rigor course list prior to graduating from high school.
- Pays for two year or four year degree
- Must graduate from a GA high school
- Must be GA resident for at least one year (Green Card or citizenship)
- Covers **FULL** tuition
- Applies automatically for Valedictorian or Salutatorian
- Must maintain 3.3 GPA while in college

Hope Scholarship

- 3.0 core GPA as calculated by GSFC (can be earned in college)
- **Must earn a minimum of 4 credits from the academic rigor course list prior to graduating from high school. (Review your HOPE transcript on GAfutures.org)**
- Two year or four year degree
- Must graduate from a GA high school
- Must be a GA resident for at least one year (Green Card or citizenship)
- Covers a **percentage** of tuition

HOPE AND ZELL MILLER GRANT

Hope Grant

- No initial GPA requirement
- Technical certificate or diploma
- Must have a high school diploma or GED
- Must be a GA resident for at least one year (Green Card or citizenship)
- Covers a **percentage** of tuition

Zell Miller Grant

- Requires **3.5 college GPA** for grant eligibility
- Does not require minimum test score
- Pays for certificate or diploma
- Must graduate from a GA high school
- Must be GA Resident for at least one year (Green Card or citizenship)
- Covers **FULL** tuition (retroactively covers previous semester once 3.5 GPA is earned)
- Must maintain 3.5 GPA while in college

HOPE GPA

HOPE GPA=

The average of your core classes, which include English, math, science, social studies, & world languages.

Includes Academic Electives (ex. Algebra Support, Psychology, Yearbook, etc.)

Includes ALL grades in these areas (**PASSED** OR **FAILED**)

ONLY SOME AP/DE earn Extra Quality Points up to a 4.0

Regular On-Level	Honors Level	AP/DE
A=4.0	A=4.0	A=4.0
B=3.0	B=3.0	B=3.5
C=2.0	C=2.0	C=2.5
D=1.0	D=1.0	D=1.5
F=0.0	F=0.0	F=0.0

WHICH CLASSES COUNT TOWARD HOPE?

All classes that begin with the following numbers...

23.x	English
27.x	Mathematics
26.x	Science
40.x	Science
45.x	Social Studies
60.x-64.x	Foreign Language
??x	Additional courses approved for fourth year of science

HOPE counts all courses that begin with the listed numbers.... **BOTH** required and elective courses. Review course list at www.gafutures.org

Check your HOPE GPA and review HOPE *rigor* requirements at www.gafutures.org

HOPE RIGOR

In order to be HOPE eligible, the class of 2023 must earn at least four credits in courses from the following categories:

Advanced math

- Algebra II
- Pre-Calculus
- AMDM

Advanced science

- Chemistry, Physics

Advanced Placement

- in core subjects

University System of Georgia

- in core subjects
- Dual enrollment

Advanced world language

- Level 2 and higher

DUAL ENROLLMENT

- Who can do it?
- What is it?
- How to apply?

DUAL ENROLLMENT (DE)

DE is a state funded program that allows 11th and 12th graders to take college classes while completing their high school diploma.

DE pays for 100% tuition, mandatory fees, and required textbooks up to a maximum cap of 30 hours (*this equates to roughly one year of full-time college enrollment or around 10 courses*)

DUAL ENROLLMENT

DE students can take approved courses in: English, math, science, social studies, or world/foreign languages

AND/OR Career Tech (CTAE) classes

The goal of Dual Enrollment is to increase college access and completion, and prepare students to enter the workforce with the skills they need to succeed.

INTERESTED IN DUAL ENROLLMENT?

Review and complete Allatoona procedures and requirements in the DE section of the Allatoona Counseling page

Research admissions requirements and application deadlines for colleges

1. Apply to the college
2. Submit SAT/ACT/Accuplacer scores (take these early – preferably, fall!)
3. Request official transcript from counseling office, if needed.

Schedule a appointment with the appropriate AHS DE counselor to choose classes and complete paperwork

<http://allatoonacounseling.weebly.com/>

JUST A FEW THINGS TO CONSIDER:

FULL-TIME OR PART-TIME PARTICIPATION

Whether your future college will accept transfer credits or how they may view DE vs. AP

Rigorous college level classes-Are you ready?

Transportation and parking issues @ the high school

Potential schedule complications, both in-school and extracurricular (especially for part-time participation)

Cobb County and college calendars are different — exam dates, spring/fall/winter breaks will be different

**DUAL
ENROLLMENT**

NAVIANCE

Naviance is a **delivery system** and **college/career search engine**, but it also **how we communicate with YOU and your parents, throughout the year.**

- What is it?
- How to login?
- Bridge Law

LOGGING INTO NAVIANCE

<https://web.cobbk12.org/allatoona>

A screenshot of the Cobb Schools website. The header includes the 'COBB SCHOOLS' logo, a 'MENU' button, and navigation links for 'LOGIN', 'TRANSLATE', and 'FIND IT FAST'. A large red arrow points from the URL above to the 'LOGIN' link. A dropdown menu is open, listing various services. The 'Naviance' link is circled in blue, and a red arrow points to it from the right. The background features a large 'A' logo and the text 'ALLATOONA HIGH SCHOOL' and '3300 Dallas-Acworth Hwy NW, Acworth, GA 30107'. A search bar is visible on the right side of the page.

COBB SCHOOLS

LOGIN ▾ TRANSLATE ▾ FIND IT FAST ▾ A A A

MENU

ALLATOONA HIGH SCHOOL

3300 Dallas-Acworth Hwy NW, Acworth, GA 30107

Accounts Login Information

GoFan Tickets

Bus Numbers & Routes

GOSA School Report Cards

Cobb Digital Library

Grades & Attendance

CTLS Learn ★

GradPoint

CTLS Support

Lunch Menus

Daily Schedule

Make Online Payments

Digital Textbooks

Naviance

Employment Opportunities

ParentVue Login Request

Enroll Your Student

Parking Application Fall 2020

Family Info Guide

Student Safety

SEARCH

Accounts Login Information for Digital Learning

LOGGING INTO NAVIANCE

- If you're on a CCSD computer, then you will be automatically logged into Naviance.
- You can access Naviance from the CCSD homepage, your school's website, as well as your school counseling department's website.
- To log into Naviance from home, you will use the following:

USER NAME= MICROSOFT 365 USER NAME	PASSWORD= CCSD PASSWORD
First.LastName@students.cobbk12.org (Some usernames include numbers; check your StudenVue.)	(This is the password you use to login to computers at school.)


NAVIANCE STUDENT HOMEPAGE

 Naviance | *Student*

Welcome, Demo Huguelet!

Search for Colleges



 Type a college name

Welcome, Seniors!

Keep Reading for College App Info!

Seniors, watch each video below as you begin the college application process. These will answer MANY of your college app, transcript, and letter of recommendation questions. Click "Read More" button to view links to videos.

HINT: You may need to copy and paste the link into your browser to view the videos.


[Read more](#)

Important To-Dos and Tasks


Relax, you have no overdue or upcoming to-dos and tasks. However, you can get ahead by going to My Planner to see what's next or create a goal or to-do.


[See All in My Planner](#)

My Favorites

 COLLEGES
[I'm thinking about](#)

 COLLEGES
[I'm applying to](#)

 COURSES
[I'm thinking about](#)

 CAREERS AND CLUSTERS
[I'm thinking about](#)

What's New

Nothing new to review this visit. Check back later.

ENTER YOUR EMAIL ADDRESS

We need your email address so we can communicate important information with you.

1. Click on the “About Me” link at the top.
2. Click on “My Account”.
3. Click on the Pencil Icon in the “Contact Information Box”.
4. Enter your email address.
5. Click “Save”.

Please get in the habit of checking email frequently.

YOU CAN ALSO USE NAVIANCE FOR...



**College and Career
Planning**



Resume Builder



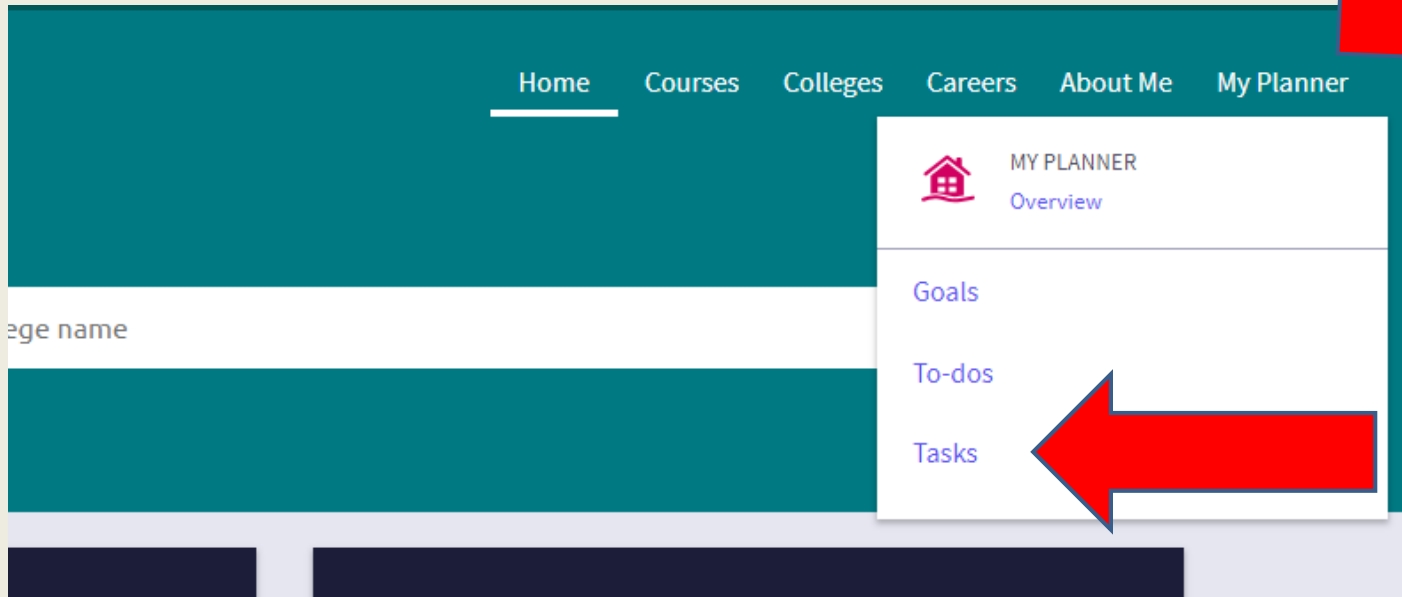
**Communicating
with your Counselor**



**Scholarship
Searches**

BRIDGE LAW

❖ Go to “My Planner” and click “Tasks”



BRIDGE LAW

1

Scroll down to
“Important To-do’s
and Tasks”

2

Select “10th Grade -
Dual Enrollment
Survey”

3

Select “take this
survey” on the right
side of your screen
to begin the survey


4


Answer the
question and click
“Save and Finish”

BRIDGE LAW

Step 1

Important To-Dos and Tasks

 TASK Complete Career Interest Profiler
DUE Saturday May 01, 2021
Assigned by Melody Mcallister

 TASK 10th Grade - Dual Enrollment Survey
DUE Saturday May 01, 2021
Assigned by Melody Mcallister



NEXT, COMPLETE THE *CAREER INTEREST PROFILER*



Scroll down to “Important to-do’s and Tasks”



Select: “Complete Career Interest Profiler”



Select “complete the Career Interest Profiler” on the right side of the screen. Look for the pink diamond, with a white arrow!





Click “Start”

BRIDGE LAW

Step 2

Important To-Dos and Tasks

 TASK Complete Career Interest Profiler
DUE Saturday May 01, 2021
Assigned by Melody Mcallister


 TASK 10th Grade - Dual Enrollment Survey
DUE Saturday May 01, 2021
Assigned by Melody Mcallister



BRIDGE LAW

Complete Career Interest Profiler

Status: Not started

 DUE Saturday May 01, 2021

Task information

Requirement:

REQUIRED

Description:

- Students, please click the teal link to “Complete Career Interest Profiler” in the upper right-hand corner of the task to complete this task.
- After completing the assessment, please make sure you save or ‘favorite’ 3 careers by clicking the heart button next to the suggested careers that most interest you.
- Once you’ve saved completed the Career Interest Profiler assessment, this task will be marked as complete.



To complete this task, you need to **complete the Career Interest Profiler.**

To-Dos

No to-dos to show

Recent Updates

No Updates

ONCE FINISHED, SELECT “VIEW MATCHING CAREERS”

The screenshot shows a 'Career Interest Profiler' interface. At the top, a progress bar indicates three steps: 'Intro', 'Profile Questions', and 'View Results'. The 'View Results' step is highlighted as 'STEP 3'. Below the progress bar, it states 'Completed on Jun 18, 2019'. The main section is titled 'Your Results' and lists six interest types with their respective scores: Social (12), Investigative (6), Artistic (5), Enterprising (2), Realistic (1), and Conventional (0). Each entry includes a brief description of the occupation type. At the bottom of the page, a green button labeled 'VIEW MATCHING CAREERS' is circled in blue.

Career Interest Profiler

Intro Profile Questions **STEP 3** View Results

Completed on Jun 18, 2019

Your Results

Social 12
Social occupations frequently involve working with, communicating with, and teaching people in groups or teams.

Investigative 6
Investigative occupations frequently involve working with ideas, and require the use of logic and critical thinking.

Artistic 5
Artistic occupations frequently involve working with forms, designs and images.

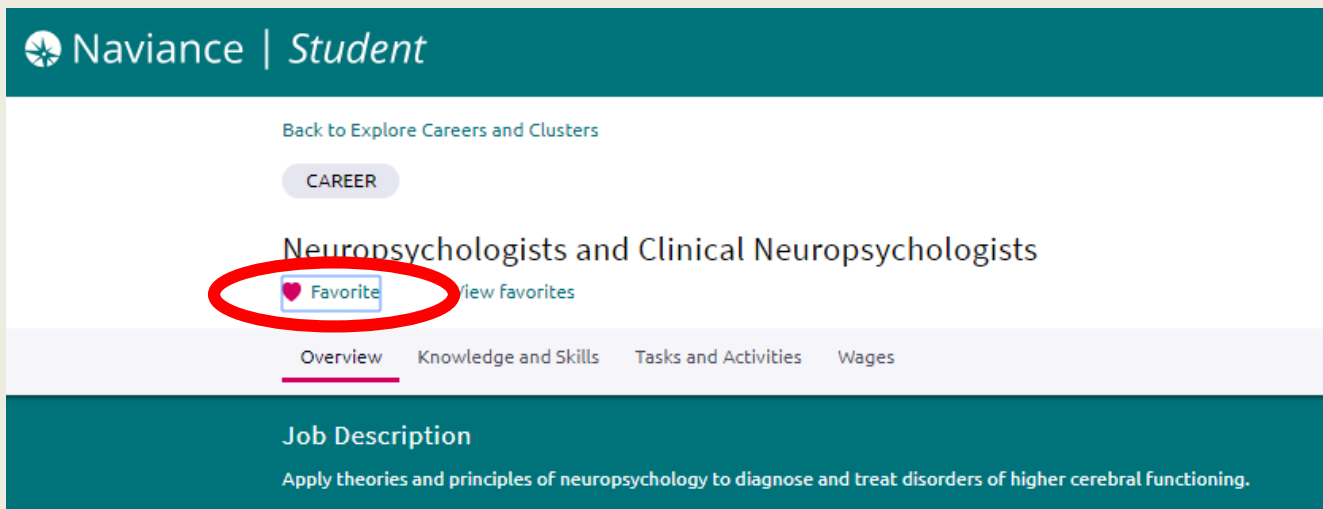
Enterprising 2
Enterprising occupations frequently involve starting up and carrying out projects.

Realistic 1
Realistic occupations frequently involve work activities that include practical, hands-on tasks and the use of tools, machinery and equipment.

Conventional 0
Conventional occupations frequently involve following set procedures and routines.

VIEW MATCHING CAREERS

EXPLORE CAREER SUGGESTIONS & SAVE 3 AS “FAVORITES”

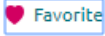


Naviance | Student

[Back to Explore Careers and Clusters](#)

CAREER

Neuropsychologists and Clinical Neuropsychologists

 Favorite [View Favorites](#)


[Overview](#) [Knowledge and Skills](#) [Tasks and Activities](#) [Wages](#)

Job Description


Apply theories and principles of neuropsychology to diagnose and treat disorders of higher cerebral functioning.

ALL OF YOUR SAVED CAREERS WILL NOW BE IN YOUR ACCOUNT UNDER “CAREERS I’M THINKING ABOUT”

My Favorite Careers and Clusters

 Type a career or cluster

Show Types


All Types 

CAREER

Aerospace Engineers

INVESTIGATIVE REALISTIC

ARTISTIC

 Favorite

CAREER

Dentists, General

INVESTIGATIVE REALISTIC SOCIAL

 Favorite

CAREER

Lawyers

ENTERPRISING INVESTIGATIVE

ARTISTIC

 Favorite

**“EDUCATION IS THE
PASSPORT TO THE FUTURE,
FOR TOMORROW BELONGS
TO THOSE WHO PREPARE
FOR IT TODAY.”**

- MALCOLM X