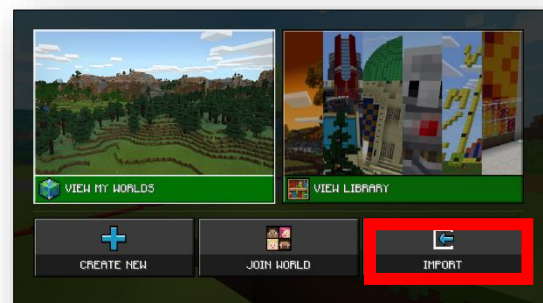


Minecraft: Importing Worlds (Desktops and Laptops)

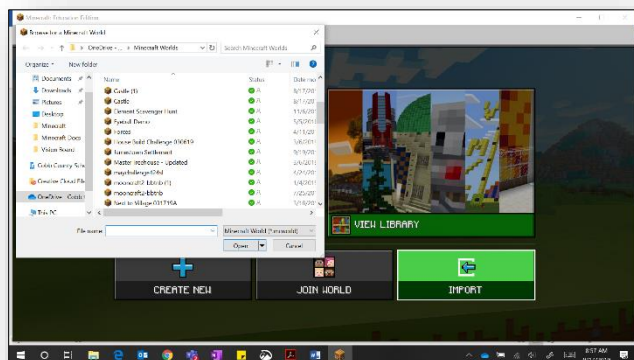
There are two ways to open .mcworld files that have been saved in alternate locations. This is useful when you are accessing a world from the Internet or from a USB drive.

Import Worlds Using the Import World Button

1. Click **Play** and then click the **Import World** button.



2. Navigate to the location of the .mcworld file.
3. Click the file and then click **Open** to open the world in Minecraft.



Import Worlds from a Saved Location

1. Go to the location where your world is saved (One Drive, File Explorer, or USB Drive).
2. Click on the name of the world. This should open Minecraft, and the world's import will begin automatically.

