

The logo for Georgia Highlands College is enclosed in a dark blue rectangular border. It features the acronym "GHC" in a large, dark blue, serif font. Above and below the acronym are two horizontal orange lines. Below these lines, the full name "GEORGIA HIGHLANDS COLLEGE" is written in a smaller, dark blue, serif font. Underneath the college name is another horizontal orange line, followed by the text "University System of Georgia" in a dark blue, sans-serif font.

GHC

GEORGIA HIGHLANDS COLLEGE

University System of Georgia

highlands.edu



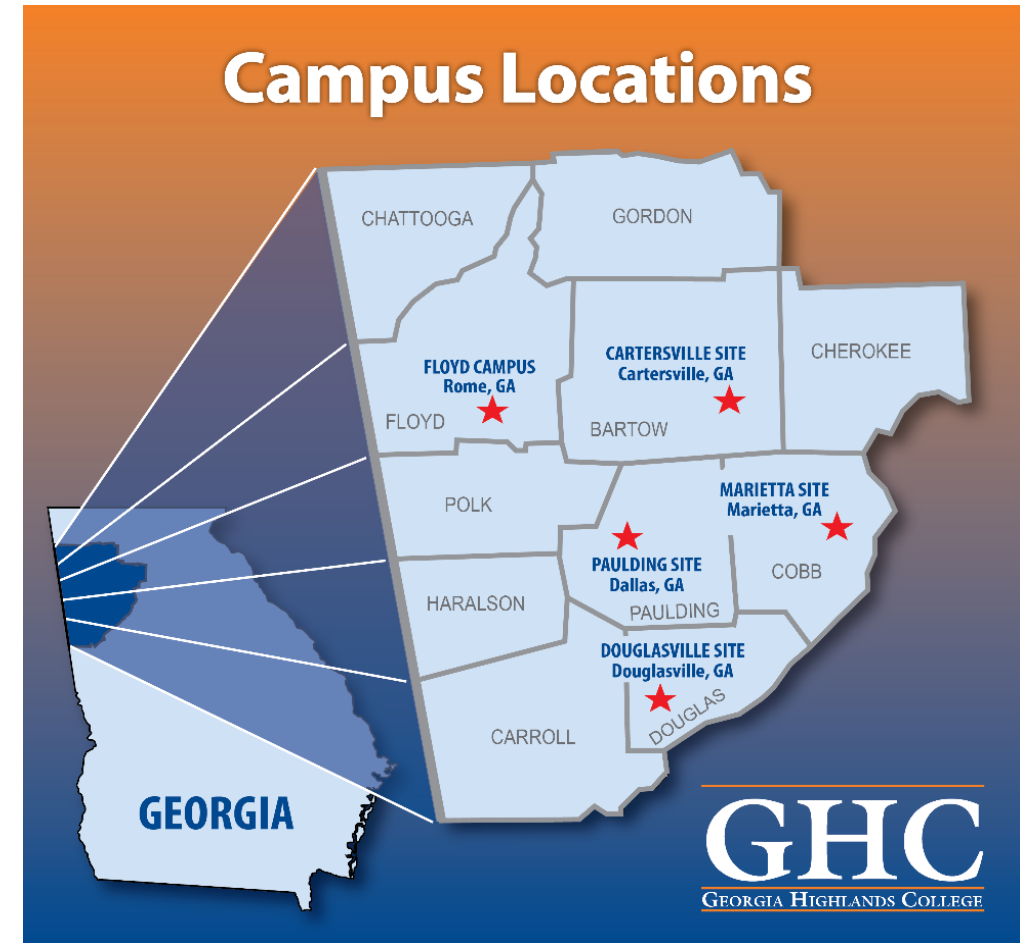
Why Dual Enroll at GHC?

- **Flexible schedule options**
 - Morning
 - Afternoon
 - Evening
 - Online
 - On campus cohort at area high schools
- **Classes available**
 - Fall, spring, & summer semesters



About GHC

- State, public college
- A member institution of the University System of GA
- 5 locations
 - Rome
 - Cartersville
 - Marietta
 - Douglasville
 - Dallas



You Can Expect

- Personable environment
- Quality instruction
- Small class sizes
- College facilities
 - Tutorial Center
 - Student Center
 - Fitness Center



GHC Admissions Requirements-10th Grade

- Student must be age 15 or older by the first day of the semester of enrollment
- 3.0 Academic GPA
- SAT - Evidence Based Reading & Writing 480
Math 510/Total 1200
- ACT- English or Reading 20
Math 20/Composite 26

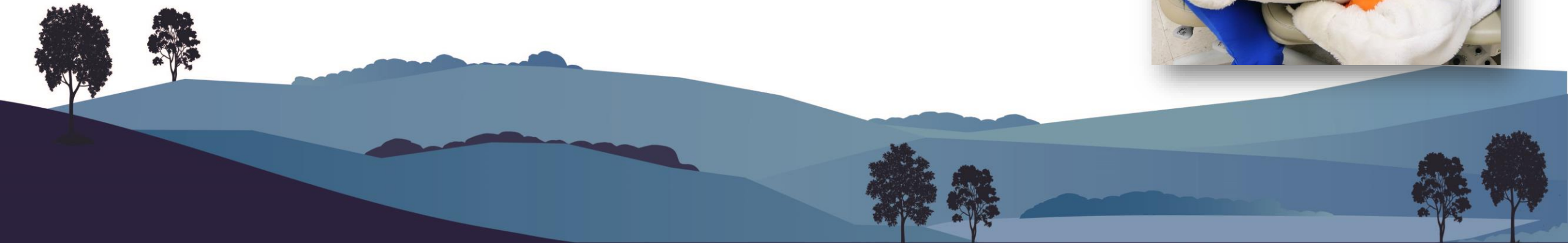
GHC Admissions Requirements-11th & 12th

- Student must be age 15 or older by the first day of the semester of enrollment
- 3.0 Academic GPA
- SAT - Evidence Based Reading & Writing 480
Math 510/Total 1050
- ACT- English or Reading 20
Math 20/Composite 20
- ACCUPLACER – Next-Gen Reading 237/WritePlacer 4
Next-Gen QAS (math) 258

DE Program Application Process

Please seek approval from high school counselor before beginning the admissions process.

- Complete GHC Dual Enrollment [Admissions Application](#) by the required deadline
- Request your ACT or SAT scores be sent to GHC or register for the ACCUPLACER test at GHC
- Submit your high school transcript or home school academic portfolio
- Complete the online [GSFC DE Funding application](#)
- Submit your [Certificate of Immunization](#)



ACCUPLACER TESTING AT GHC

- After submitting your GHC Admissions Application, log onto your [Check Admissions Status](#) page
- Select the Schedule ACCUPLACER Testing link
- Make your Reservation
- Pay the \$30 testing fee

- Applicants can take the ACCUPLACER two times in a one year period.



Dual Enrollment Admission Application Deadlines

SEMESTER	DEADLINE
Fall Semester (August – December)	April 1st
Spring Semester (January – May)	November 1st
Summer Semester (May – August)	March 1st

State Dual Enrollment Funding

- Students meeting the requirements will receive state funding for [eligible courses](#):
- State funding will cover:
 - Up to 15 credit hours per semester
 - Up to 30 total credit hours (cap)
 - Core courses: Science, Math, English, Social Science, Foreign Language
 - Mandatory fees
 - Required textbooks/materials



State Dual Enrollment Funding Limitations

- **State Dual Enrollment Funding *DOES NOT* cover:**
 - **Courses taken by 9th or 10th grade students**
(exception: Zell Miller eligible 10th grade students)
 - **Elective courses (PHED, ARTS, THEA, MUSC)**
 - **Course-related fees (Science Lab fee: \$50)**
 - **Courses taken over 30 hr. cap**
 - **“Retake” courses**
 - **Courses taken after 2nd withdrawal**

State Dual Enrollment Funding

Visit GAFutures for more information on the Dual Enrollment program state regulations and to complete the online funding application:

www.gafutures.org



Questions?

Mary Ann Sailors

Dual Enrollment Coordinator

dualenroll@highlands.edu

